

STAGE 2A, 2B & 3 ESQ 1818 PENRITH

LANDSCAPE DEVELOPMENT APPLICATION

JUNE 2019

DRAWING LIST

TITLE	DWG No.	Rev
TITLE PAGE	OC-L-000	D
LANDSCAPE PLAN - OVERALL	OC-L-100	C
DETAILED PLANS:		
THE ADDRESS & LOOP LANDSCAPE PLAN	OC-L-101	C
BUILDING C LANDSCAPE PLAN	OC-L-102	B
RIPARIAN CORRIDOR LANDSCAPE PLAN	OC-L-103	C
POCKET PARK / POOL PODIUM & COMMUNAL GARDEN, BUILDING D & E	OC-L-104	C
LEVEL 4 ROOFTOP GARDEN, BUILDING D	OC-L-105	B
LEVEL 1 PODIUM, BUILDING C	OC-L-106	B
LEVEL 4 ROOFTOP GARDEN, BUILDING G	OC-L-107	A
SECTIONS		
SECTION AA THE ADDRESS	OC-L-200	B
SECTIONS BB & CC RIPARIAN CORRIDOR	OC-L-201	C
SECTION DD POCKET PARK / POOL PODIUM	OC-L-202	C
SECTION EE POCKET PARK / POOL PODIUM	OC-L-203	C
SECTION GG LEVEL 1 PODIUM, BUILDING C	OC-L-204	B
MATERIALS SCHEDULE		
INDICATIVE PLANT SCHEDULES	OC-L-301-303	B
SUMMARY OF EXISTING TREES	OC-L-304	A

LANDSCAPE AREA CALCULATIONS

REFER TO ARCHITECTURAL DOCUMENTATION: DATED 07.06.2019 PREPARED BY TURNER ARCHITECTS FOR LANDSCAPE AREA AND DEEP SOIL CALCULATIONS.

Landscape Area	
Penrith DCP 2014 Volume 1 Section D2 cl.2.1.4: - "The landscape area shall be a minimum of 35% if the site is R4 High Density Residential" - "Landscaped areas must be minimum dimensions of 2 metres. Areas less than 2 metres in width will be excluded from the landscape area calculation."	
Landscape Calculation - Stage 2&3	
Site area:	36,300m ²
Target DCP landscape area (Minimum 2m dimension, 35% site area)	12,705m ²
Landscape area achieved (Greater than 2m dimension):	
Ground:	16,890m ²
Podium:	1,020m ²
Roof Level:	225m ²
Total landscaped area	18,135m ²
% of site area	49.95%

The total landscaped area meets the DCP minimum area requirements.

Deep Soil Requirements

ADG Part 3E:
- "For site area greater than 1,500sqm, min. dimension for deep soil area is 6m"
- "Minimum requirement is 7% site area, design advice for larger sites is 15%"

Penrith DCP 2014:
- Does not address deep soil area

Deep Soil Calculation - Stage 2&3	
Site area:	36,300m ²
Target DCP deep soil area (Minimum 6m dimension, 15% site area)	5,445m ²
Deep soil area achieved (Greater than 6m dimension)	13,165m ²
% of site area	36.2%

The total deep soil area meets the ADG minimum area requirements.

NOTE:
LANDSCAPE DRAWINGS ARE BASED ON THE FOLLOWING CONSULTANT DOCUMENTATION:
- ARCHITECTURAL DOCUMENTATION: DATED 07.06.2019 PREPARED BY TURNER ARCHITECTS
- CIVIL DOCUMENTATION: DATED 11.03.2019
- ARBORIST REPORT DATED 29TH FEBRUARY, 2016, PREPARED BY AUSTRALIA TREE CONSULTANTS PTY LTD.
- ARBORIST INSPECTION DA REPORT DATED 5TH JUNE, 2019, PREPARED BY AUSTRALIA TREE CONSULTANTS PTY LTD.

PLEASE REFER TO ALL CONSULTANT'S DOCUMENTATION FOR FURTHER INFORMATION



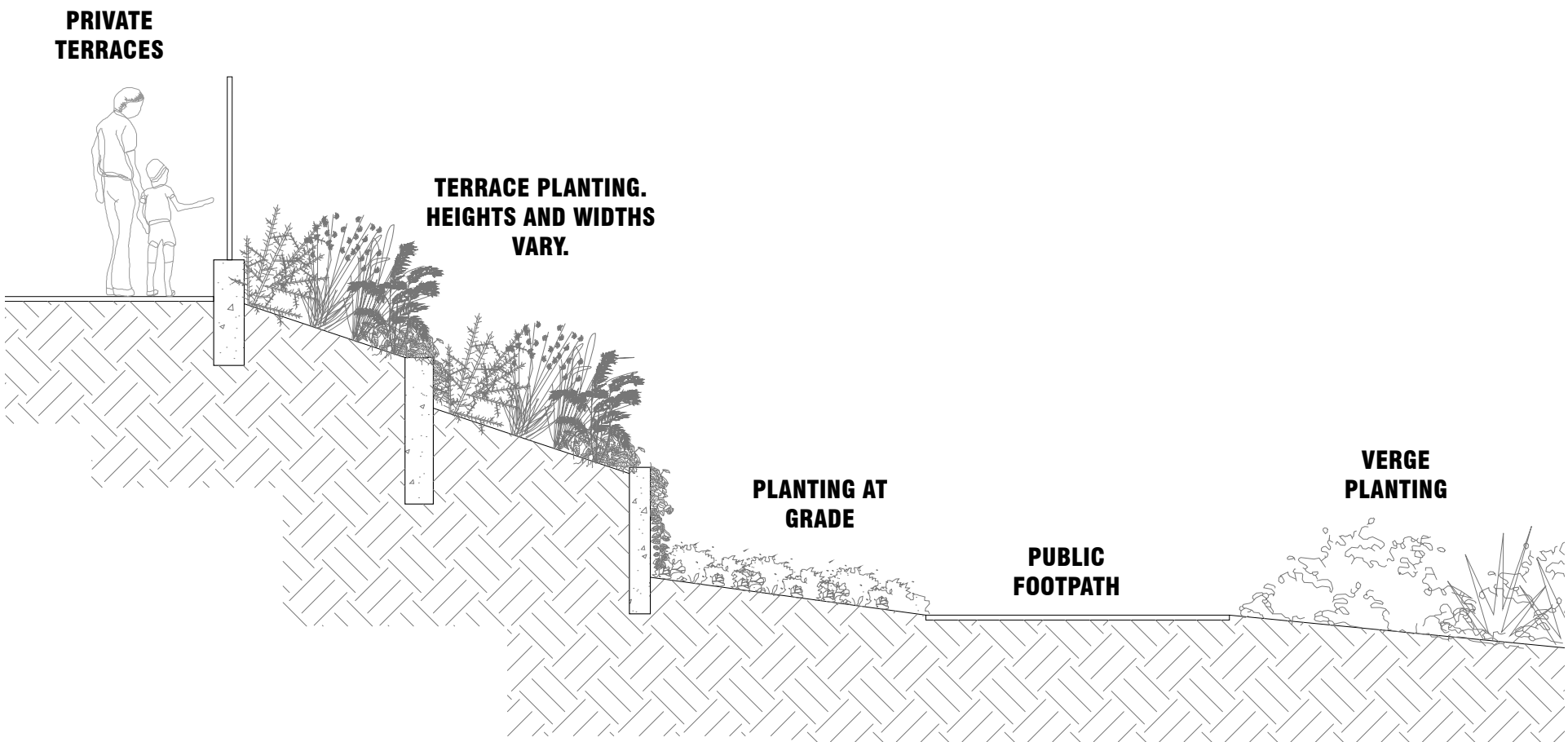




PRECEDENT IMAGES



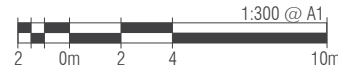
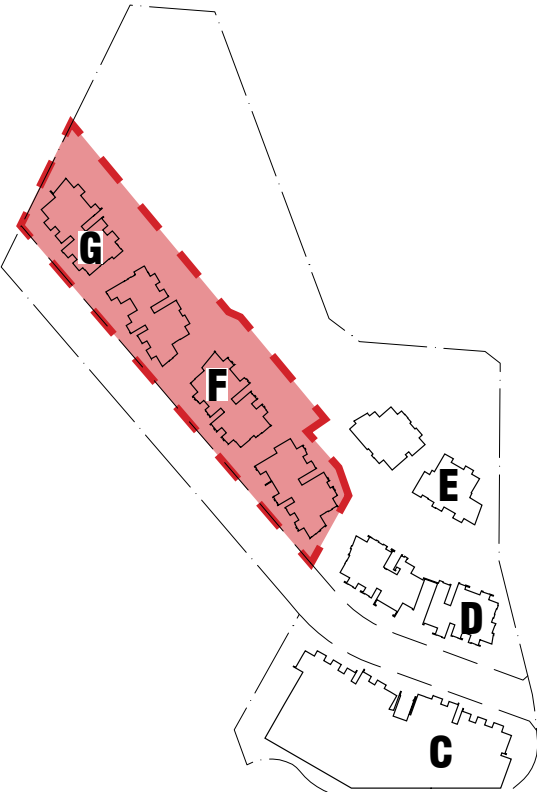
TYPICAL PLANT TERRACING ADJACENT PUBLIC FOOTPATH DETAIL - NTS



LEGEND

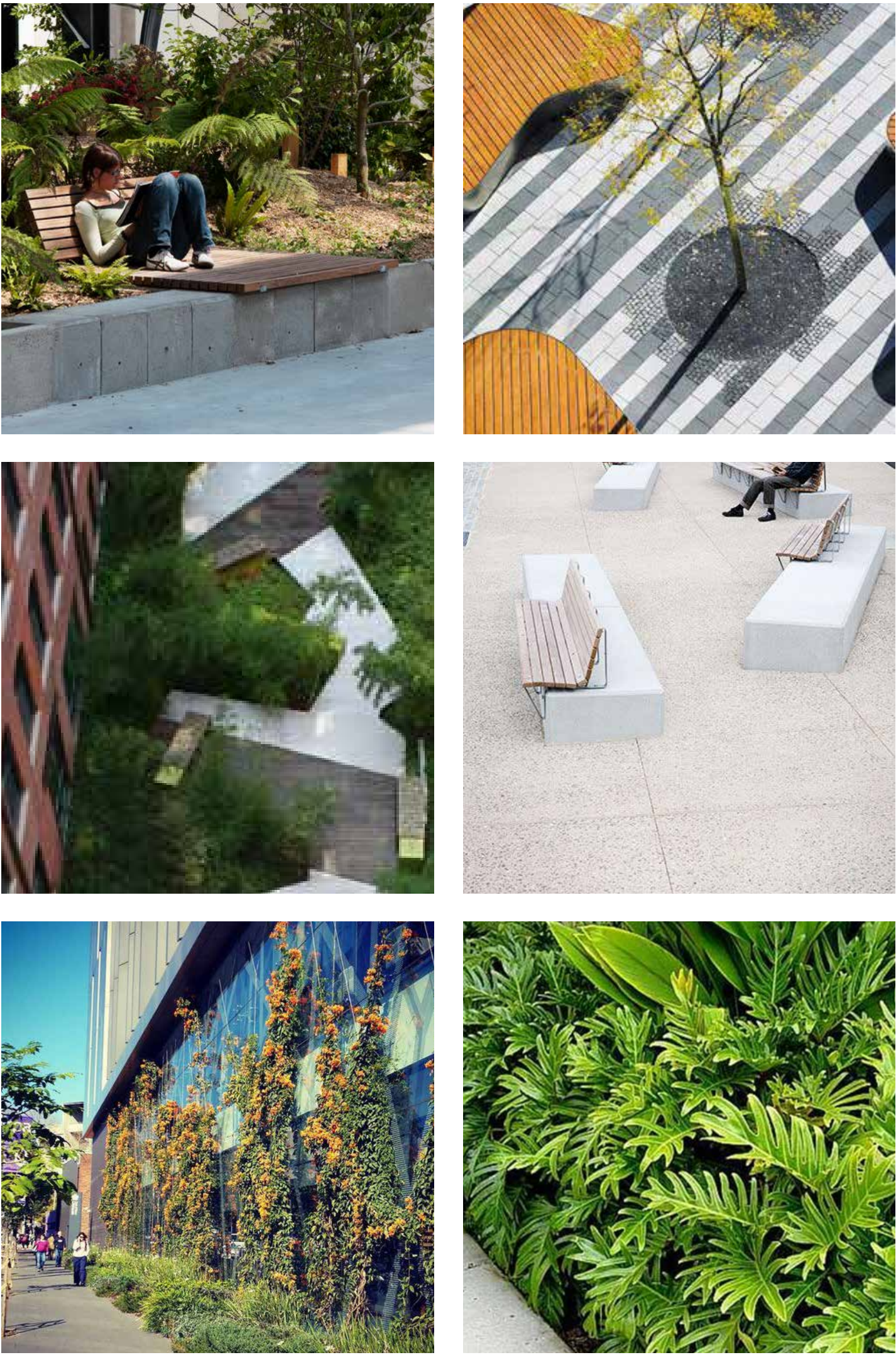
- BOUNDARY LINE
- FEATURE TREES
- AMENITY TREES
- AVENUE TREES
- ASPHALT
- SMALL FORMAT GRANITE PAVING
- LARGE FORMAT GRANITE PAVING
- GRANITE COBBLE SETTS
- MASS PLANTING

KEY PLAN





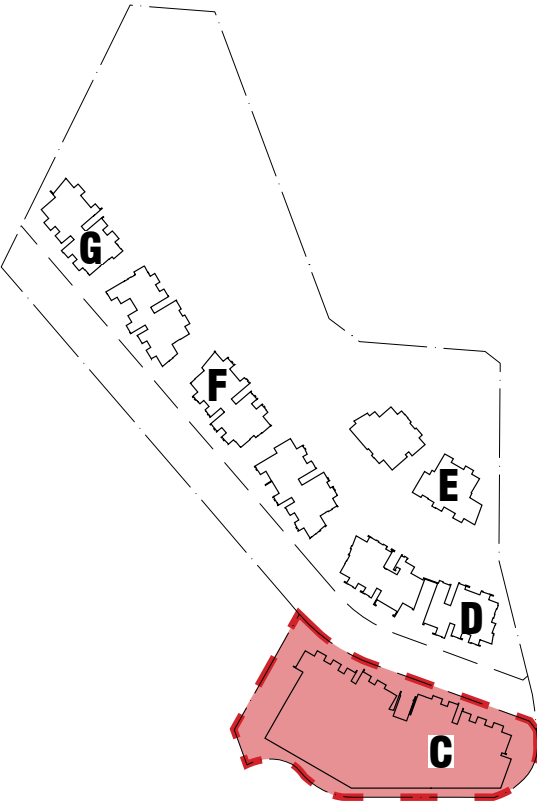
PRECEDENT IMAGES



LEGEND

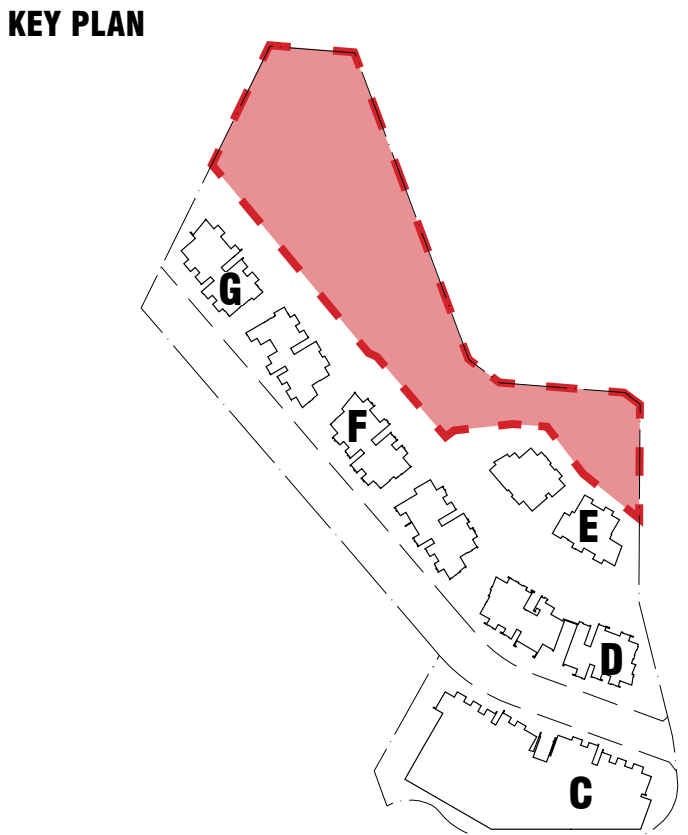
- BOUNDARY LINE
- FEATURE TREES
- AMENITY TREES
- ASPHALT
- SMALL FORMAT GRANITE PAVING
- LARGE FORMAT GRANITE PAVING
- GRANITE COBBLE SETTS
- MASS PLANTING
- FEATURE PLANTING

KEY PLAN





- LEGEND**
- BOUNDARY LINE
 - RIPARIAN ZONE
 - PROPOSED TREES
 - ASPHALT
 - ACCESS LOOP ROAD
 - EXPOSED AGGREGATE CONCRETE PAVING
 - LARGE FORMAT GRANITE PAVING
 - BOARD WALK
 - MASS PLANTING
 - RIPARIAN PLANTING
 - LAWN



NOTE:
REFER BUSHFIRE PROTECTION ASSESSMENT,
ECOLOGICAL AUSTRALIA

REFER VEGETATION MANAGEMENT PLAN (VMP),
WOODLOTS AND WETLANDS PTY LTD

- AS NOTED IN THE BUSHFIRE PROTECTION ASSESSMENT FOR THE ASSET PROTECTION ZONE:
THE RE-VEGETATION OF THE RIPARIAN CORRIDOR IS TO BE MANAGED TO AN INNER PROTECTION AREA
APZ STANDARD TO THE FOLLOWING PBP COMPLIANT SPECIFICATION:
- THE PRESENCE OF A FEW SHRUBS OR TREES IS ACCEPTABLE PROVIDED THEY:
 - ARE WELL SPREAD OUT AND DO NOT FORM A CONTINUOUS CANOPY;
 - ARE NOT SPECIES THAT RETAIN DEAD MATERIAL OR DEPOSIT EXCESSIVE QUANTITIES OF GROUND FUEL IN A SHORT PERIOD OR IN A DANGER PERIOD; AND
 - ARE LOCATED FAR ENOUGH AWAY FROM THE BUILDING SO THAT THEY WILL NOT IGNITE FUTURE BUILDINGS BY DIRECT FLAME CONTACT OR RADIANT HEAT EMISSION.
 - ANY LANDSCAPING OR PLANTINGS SHOULD PREFERABLY BE LOCAL ENDEMIC MESIC SPECIES OR OTHER LOW FLAMMABILITY SPECIES;
 - A MINIMAL GROUND FUEL IS TO BE MAINTAINED TO INCLUDE LESS THAN 4 TONNES PER HECTARE OF FINE FUEL (FINE FUEL MEANS ANY DEAD OR LIVING VEGETATION OF <6 MM IN DIAMETER E.G. TWIGGS LESS THAN A PENCIL IN THICKNESS. 4 T/HA IS EQUIVALENT TO A 1 CM THICK LAYER OF LEAF LITTER); AND
 - ANY STRUCTURES STORING COMBUSTIBLE MATERIALS SUCH AS FIREWOOD (E.G. SHEDS) MUST BE SEALED TO PREVENT ENTRY OF BURNING DEBRIS.

FIRE RETARDANT SPECIES HAVE BEEN PROPOSED FOR THE ASSET PROTECTION ZONE

LANDSCAPE BUFFER ZONE AS IDENTIFIED IN DCP

DEFINED LOW FLOW CHANNEL MEANDERING THROUGH WIDER OUTER CHANNEL FOR HIGH FLOW CONVEYANCE
CREEK BED / CENTRELINE LINED WITH SMALL BOULDERS.
REFER TO CIVIL DOCUMENTATION

AS NOTED IN THE VEGETATION MANAGEMENT PLAN; KEY ACTIONS INCLUDE: REMOVING WEEDS, REPLANTING THE RIPARIAN ZONE AND REDEFINING THE MAIN FLOW PATH

VIEWING DECK WITH INTEGRATED SEATING, SHADE STRUCTURE AND INTERPRETIVE SIGNAGE

RETAINING WALLS + EMBANKMENTS IN CREEK BASIN. REFER TO CIVIL ENGINEER'S DOCUMENTATION FOR LOCATION AND LEVELS

PLANTED CREEK EMBANKMENT. REFER TO CIVIL DOCUMENTATION FOR LOCATION AND GRADIENTS

EXISTING CONCRETE CHANNEL & GROSS POLLUTANT TRAP TO BE SCREENED AND NATURALISED WITH BOULDERS AND GRASSES ALONG ITS EDGE COMPLIANT WITH RIPARIAN ZONE PLANTING AND FLOOD CONVEYANCE

GPT MAINTENANCE TRUCK ACCESS TO CIVIL ENGINEERING'S DOCUMENTATION. MATERIAL TO BE PERMEABLE SUCH AS DECOMPOSED GRAVEL
OPEN RIPARIAN ZONE WITH LOW FIRE RETARDANT GRASSES AND GROUND COVERS WITH SPARSELY PLANTED TREES (NO CONNECTING CANOPIES)

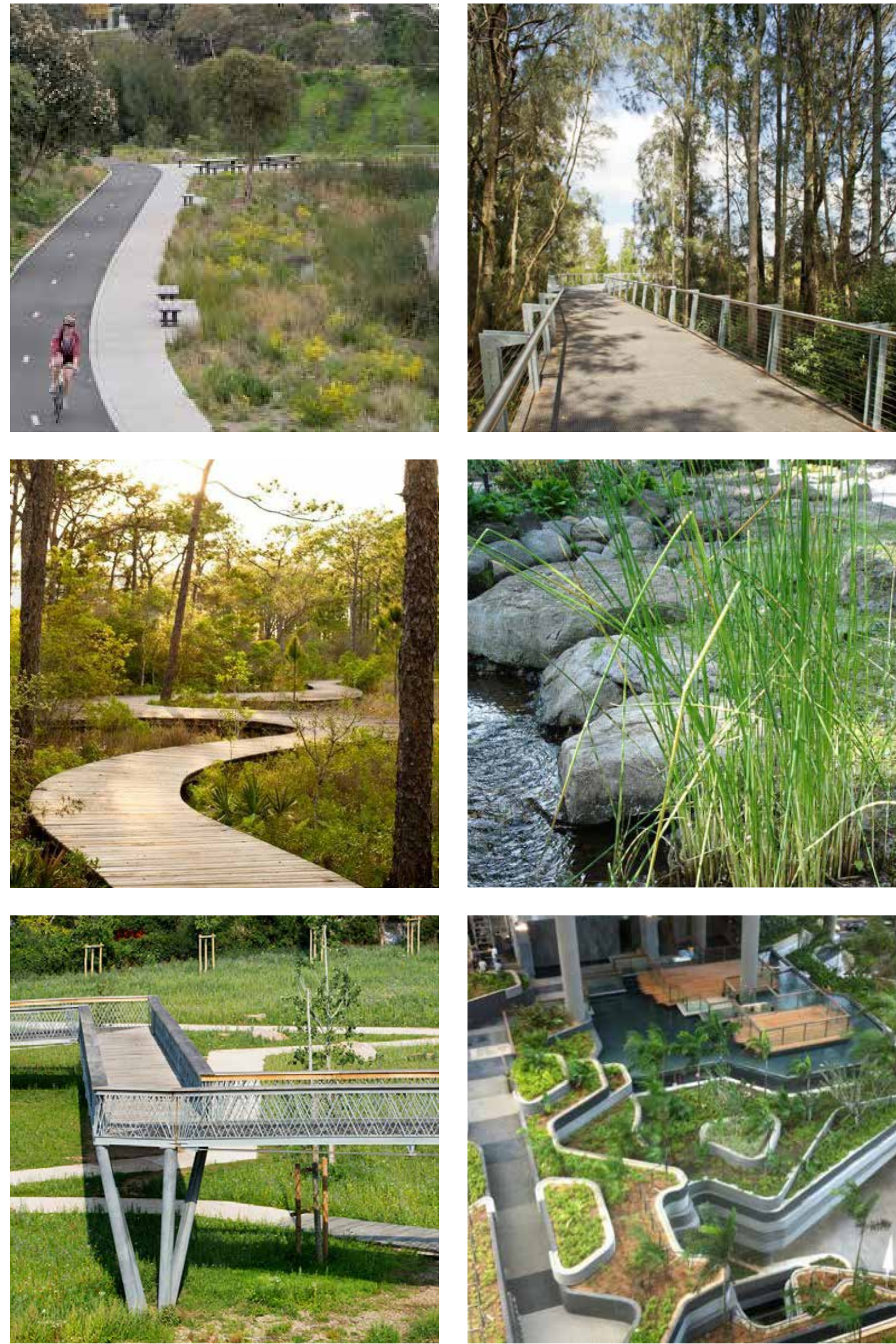
RETAINING WALLS + EMBANKMENTS IN CREEK BASIN. REFER TO CIVIL ENGINEER'S DOCUMENTATION FOR LOCATION AND LEVELS

SCREEN / BUFFER PLANTING TO BUILDING EDGE

PLANTED CREEK EMBANKMENT AT 1:3
EXISTING TREES TO BE RETAINED. REFER OC-L-04 AND VEGETATION MANAGEMENT PLAN + ARBORIST REPORT

BOARDWALK MEANDERING AMONGST EXISTING TREES, LINKING TO EXISTING PRAM RAMP ON RETREAT DRIVE

PRECEDENT IMAGES



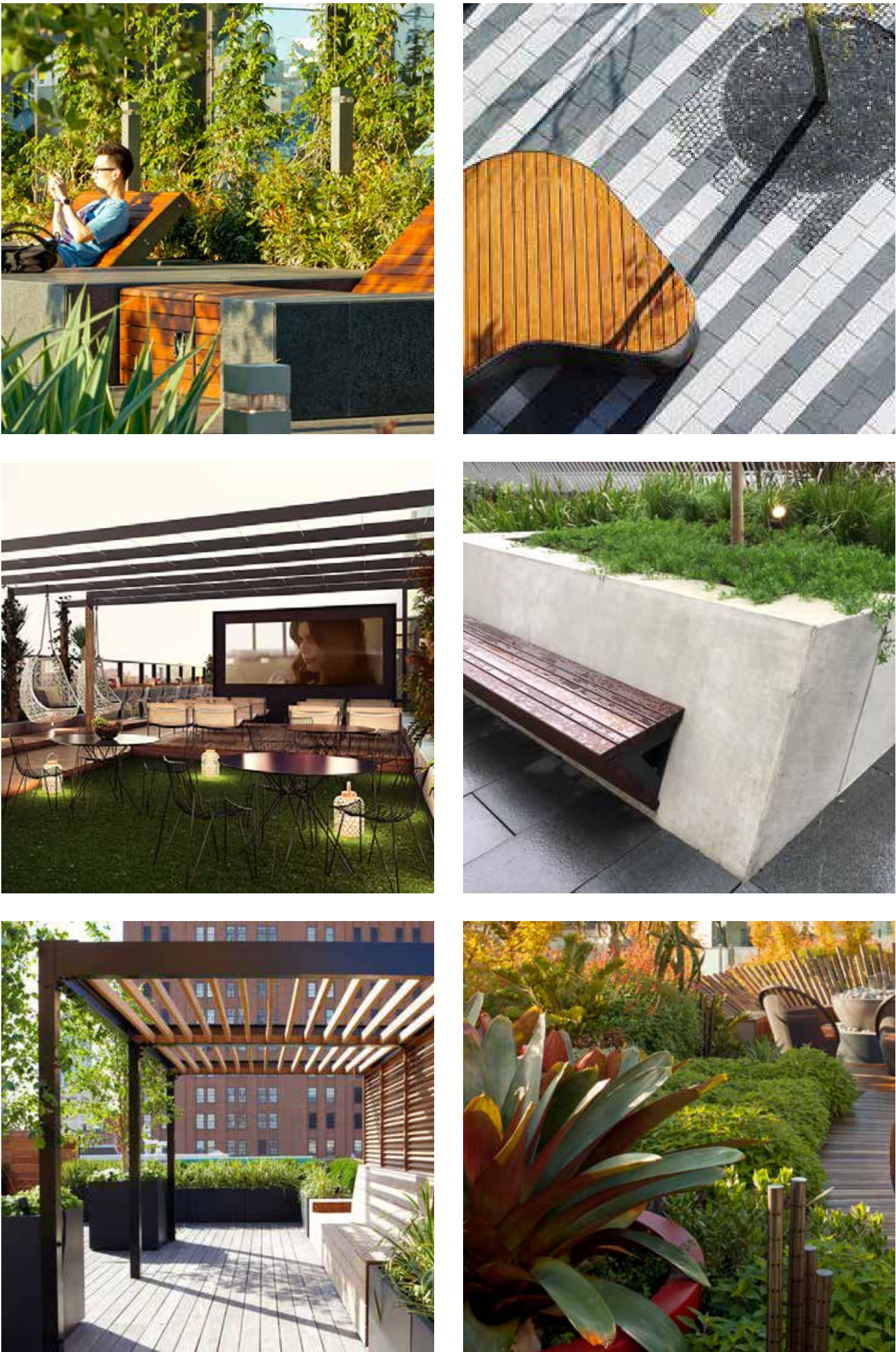


PRECEDENT IMAGES





PRECEDENT IMAGES

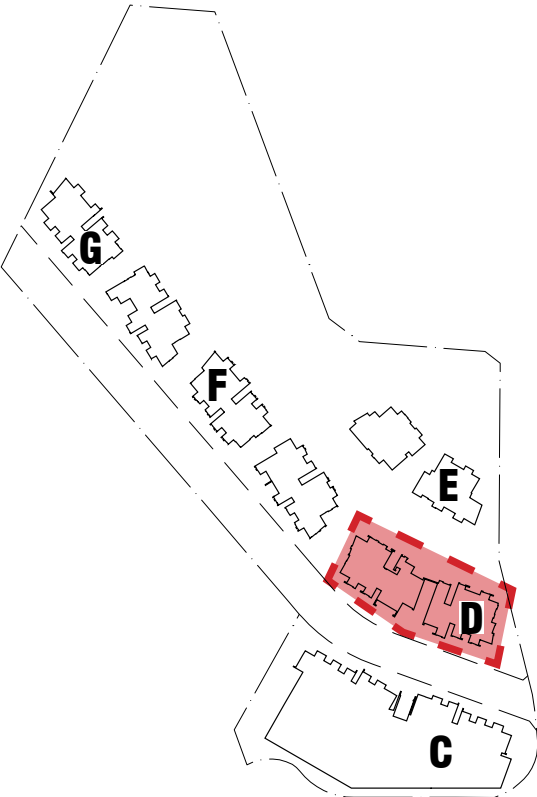


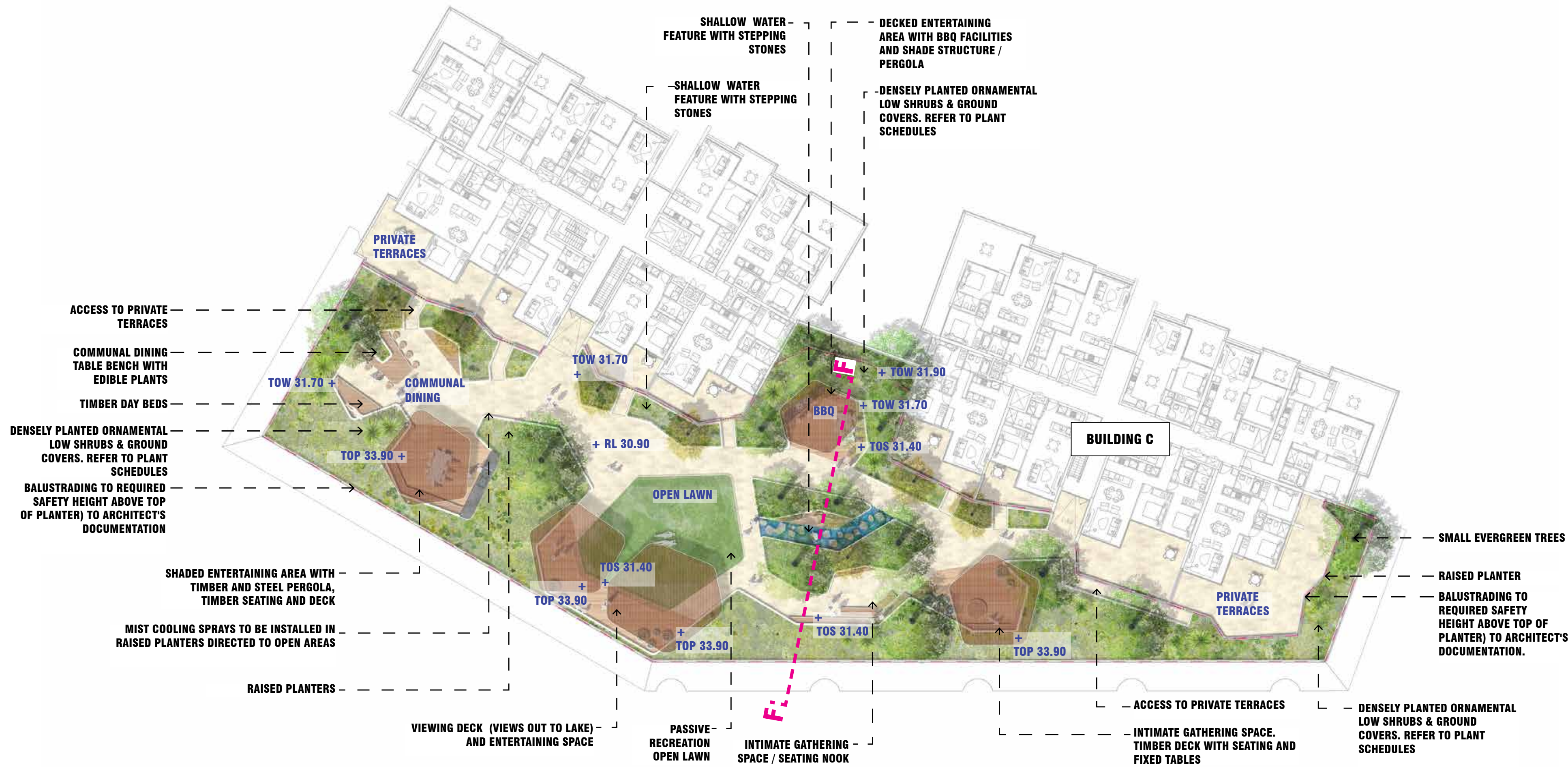
- DENSELY PLANTED ORNAMENTAL LOW SHRUBS & GROUND COVERS. REFER TO PLANT SCHEDULES
- PROPOSED BBQ, BENCHES AND CUPBOARDS BELOW
- RAISED PLANTERS
- DECK AREA
- AWNING OVER LIFT ENTRY TO ARCHITECT'S DETAILS
- ACCESS TO ADJACENT BUILDING
- FIXED OUTDOOR FURNITURE
- SMALL EVERGREEN TREES
- INTIMATE GATHERING SPACE / SEATING NOOK
- PERGOLA / SHADE STRUCTURES
- SERVICE ACCESS

LEGEND

- EVERGREEN TREES
- DECIDUOUS TREES
- FEATURE PLANTS
- SMALL FORMAT GRANITE PAVING ON JACKS
- TIMBER DECKING
- MASS PLANTING
- AWNING
- SANDSTONE DAYBED
- SHADE STRUCTURE
- TIMBER BENCH
- BBQ
- WATER FEATURE

KEY PLAN



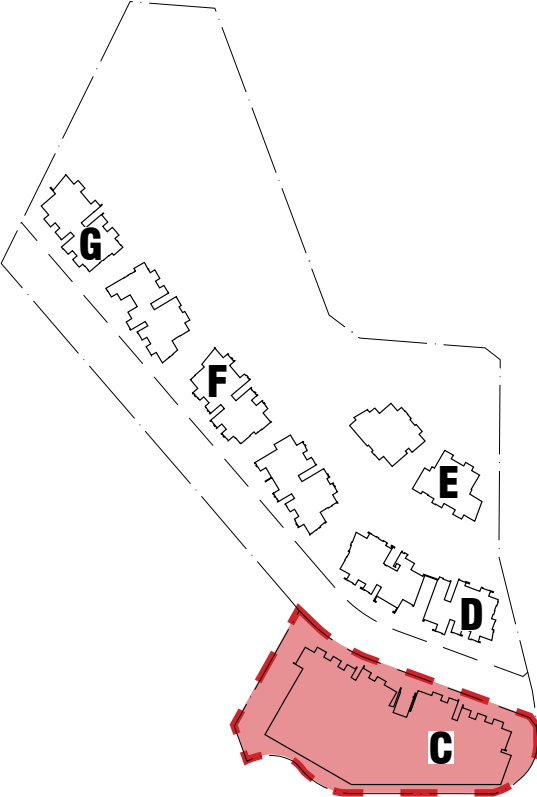


LEGEND

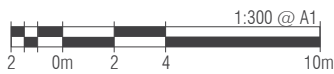
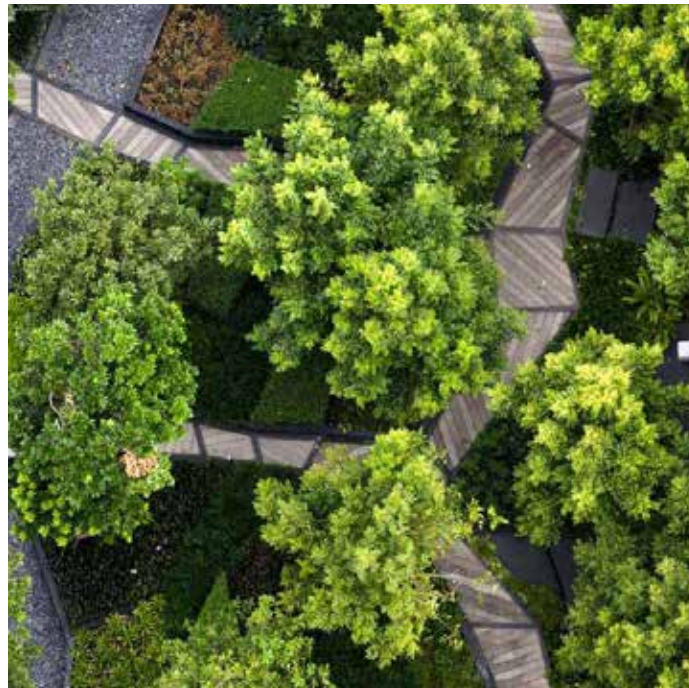
- EVERGREEN TREES
- FEATURE PLANTS
- SMALL FORMAT GRANITE PAVING ON JACKS
- TIMBER DECKING
- MASS PLANTING
- TURF
- WATER FEATURE
- SHADE STRUCTURE
- TIMBER BENCH
- BBQ
- STEPPING STONES
- PLANTING IN POT

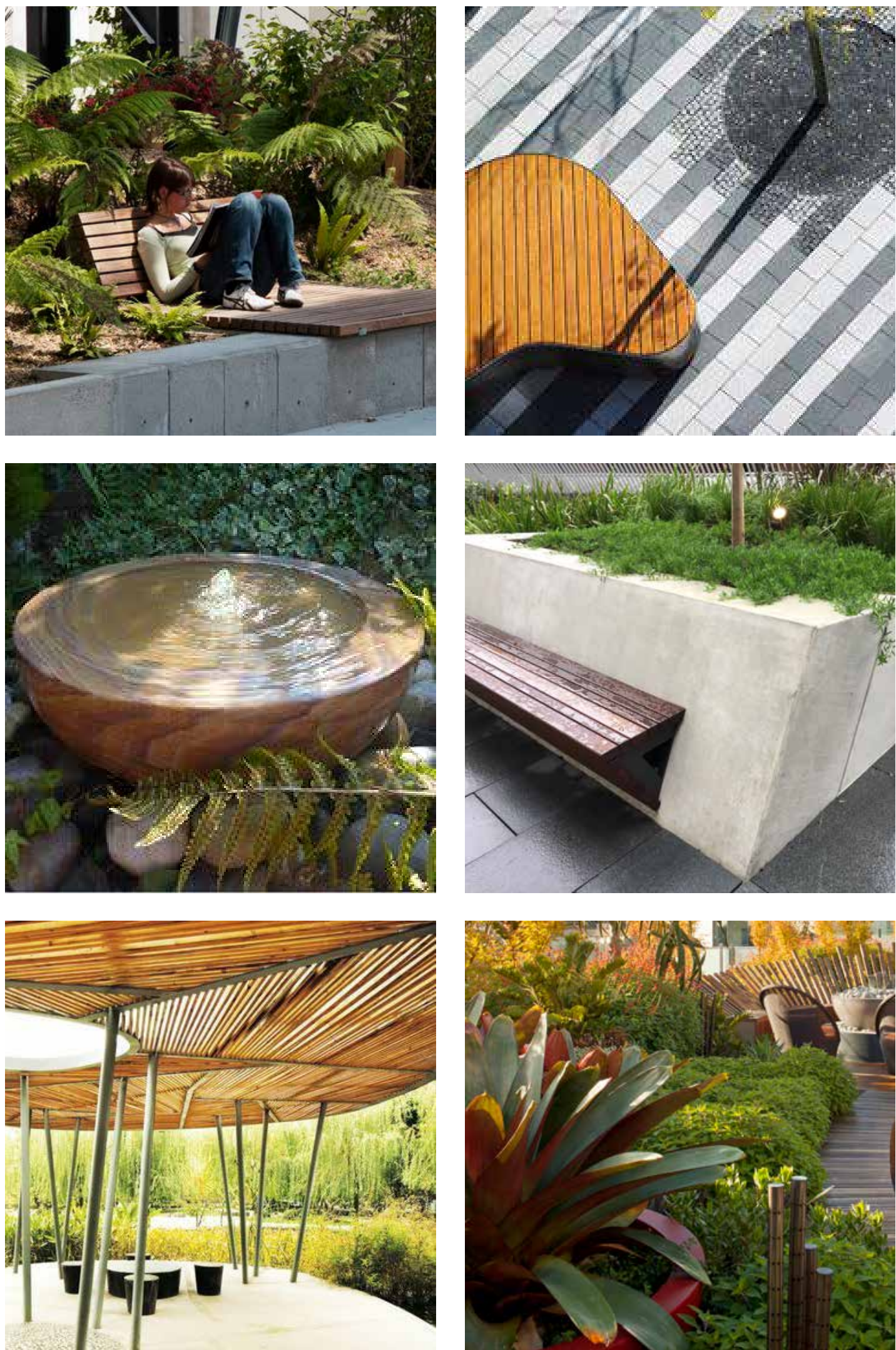
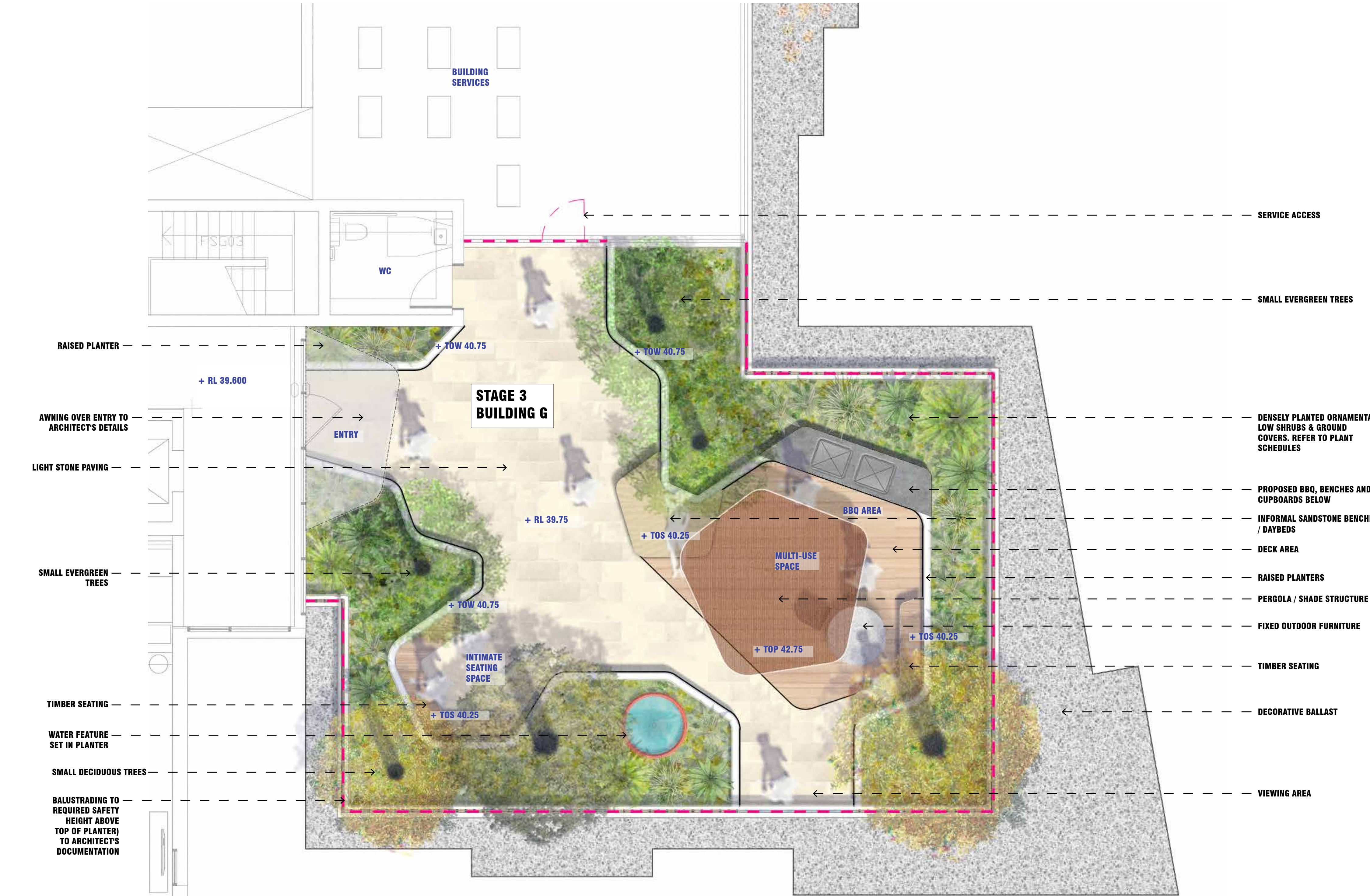
TOW - TOP OF WALL
TOP - TOP OF PERGOLA
TOS - TOP OF SEAT

KEY PLAN



PRECEDENT IMAGES





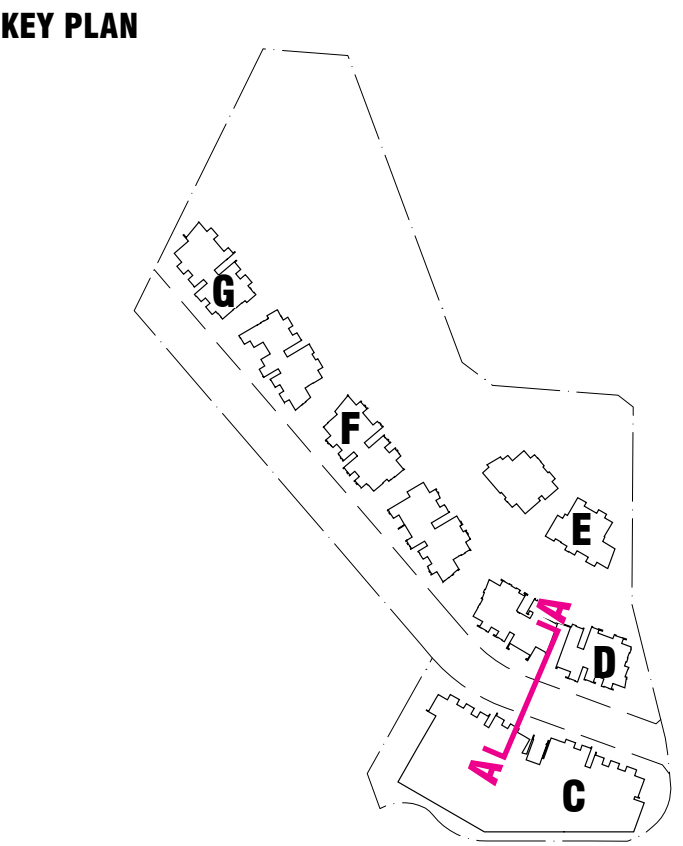
LEGEND

- EVERGREEN TREES
- DECIDUOUS TREES
- FEATURE PLANTS
- SMALL FORMAT GRANITE PAVING ON JACKS
- TIMBER DECKING
- MASS PLANTING
- AWNING
- SANDSTONE DAYBED
- SHADE STRUCTURE
- TIMBER BENCH
- BBQ
- WATER FEATURE

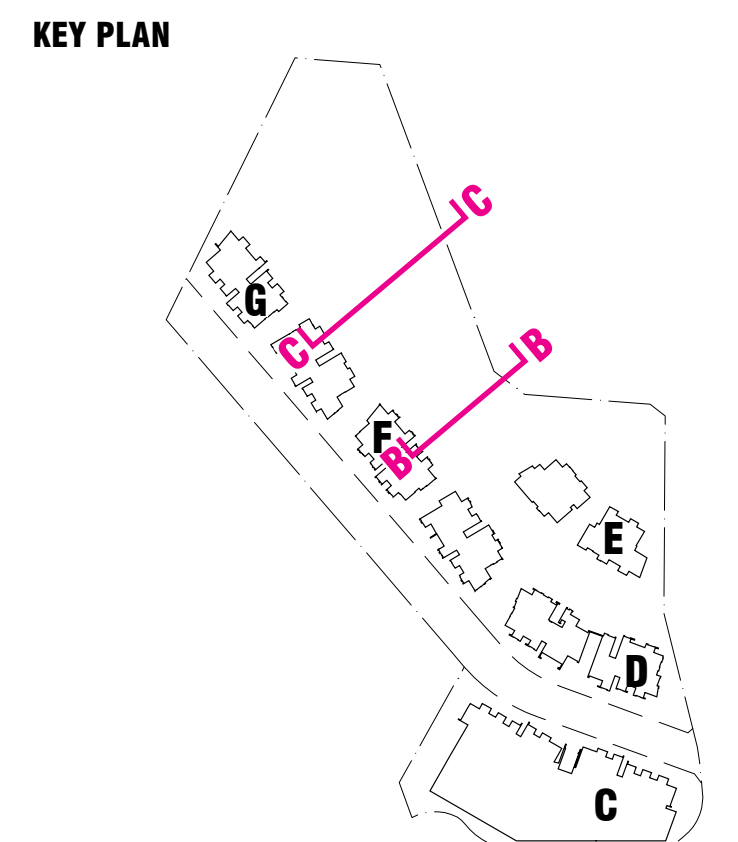
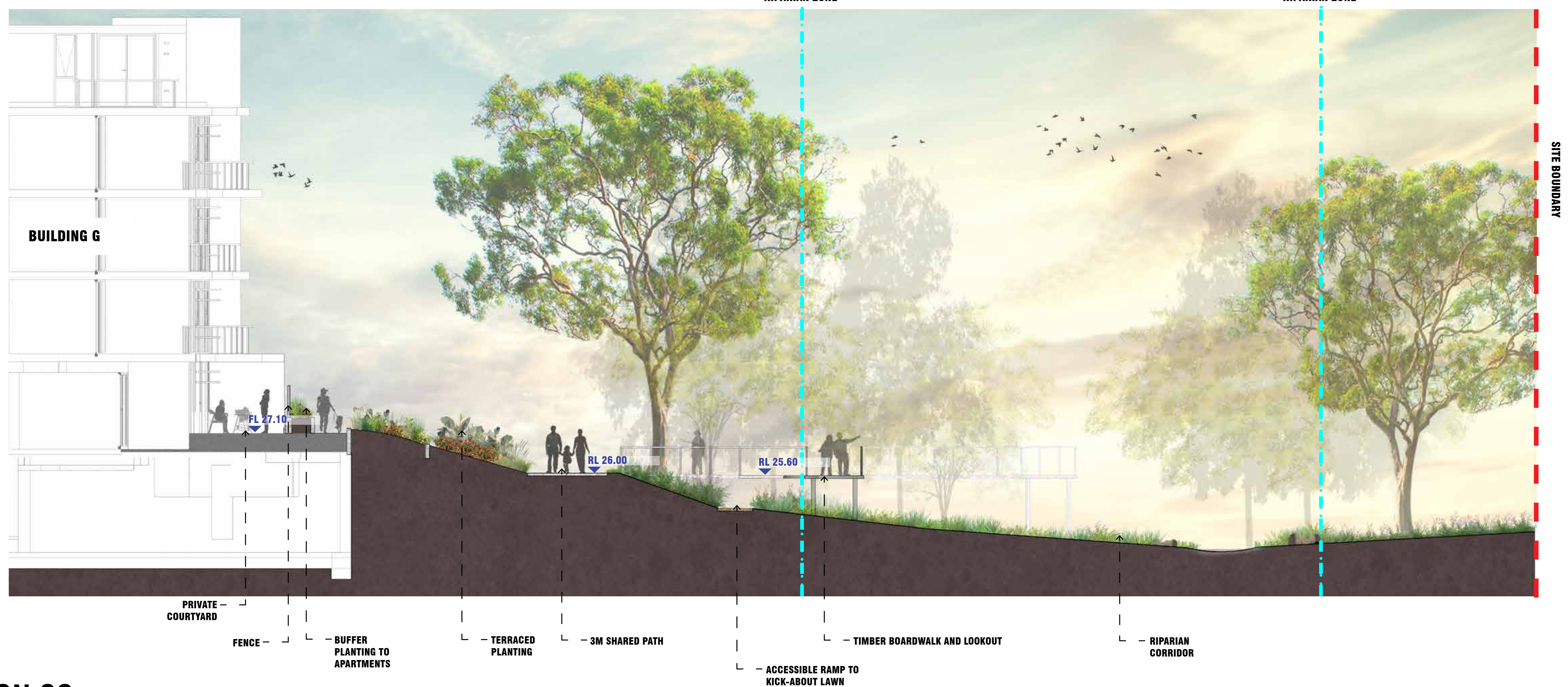
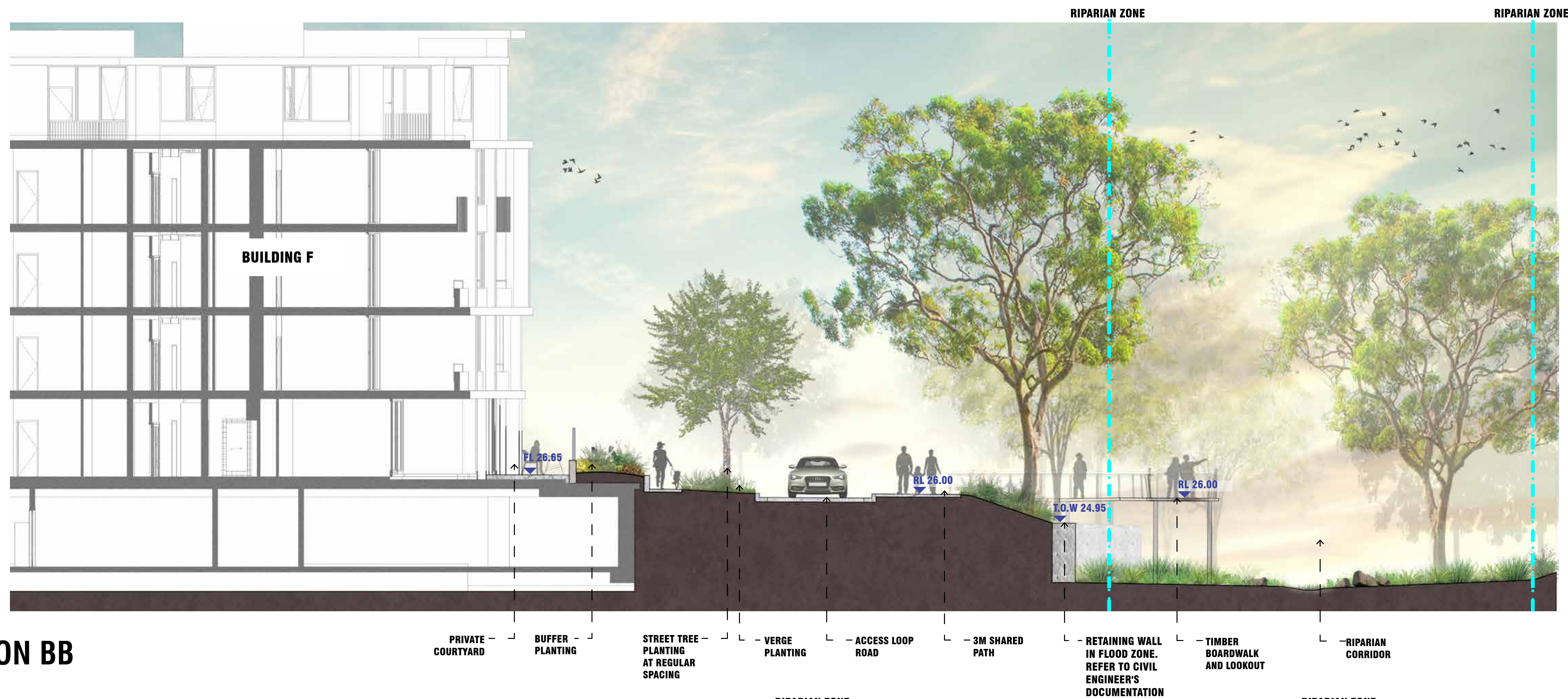
KEY PLAN

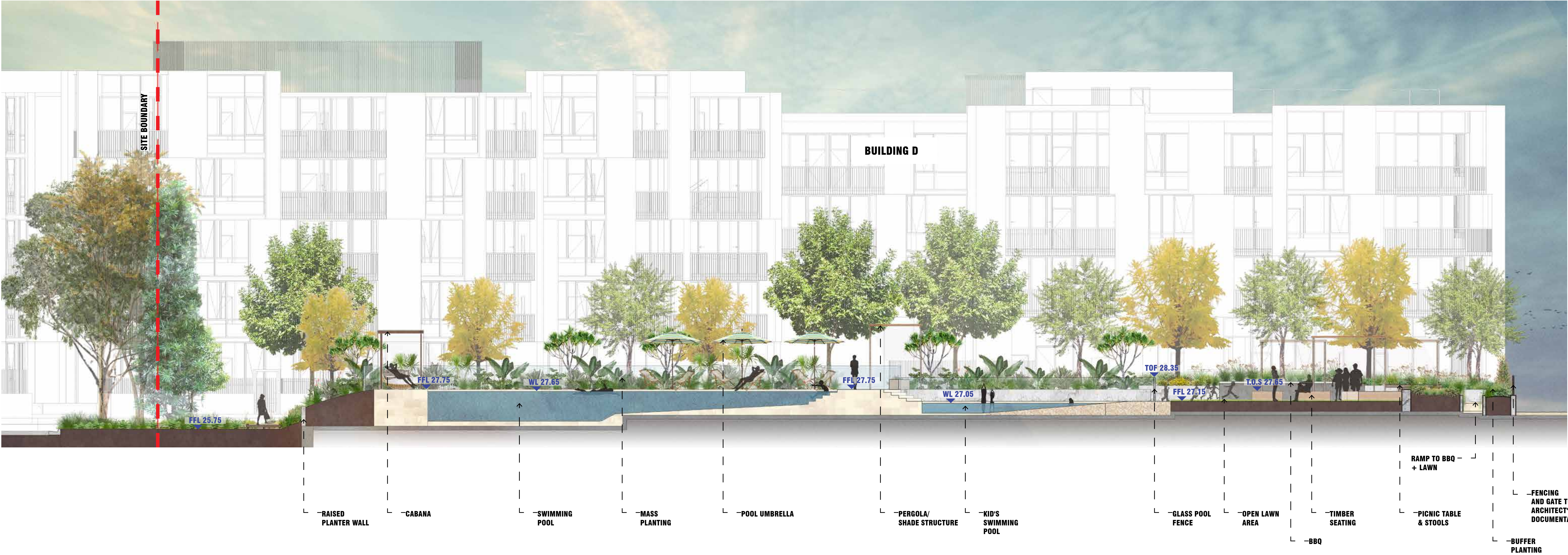


TOW - TOP OF WALL
TOP - TOP OF PERGOLA
TOS - TOP OF SEAT

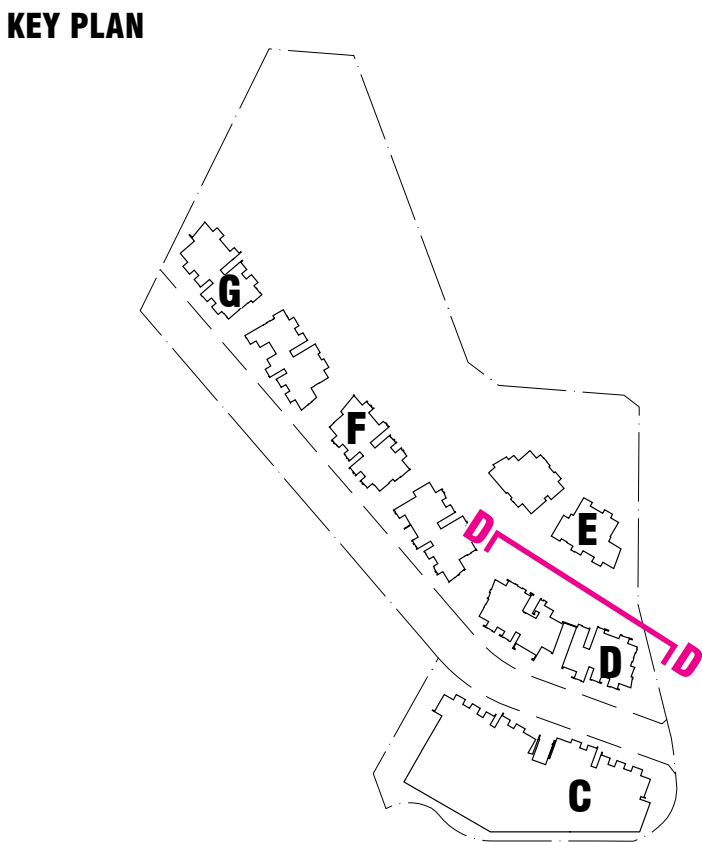


INDICATIVE SECTION AA



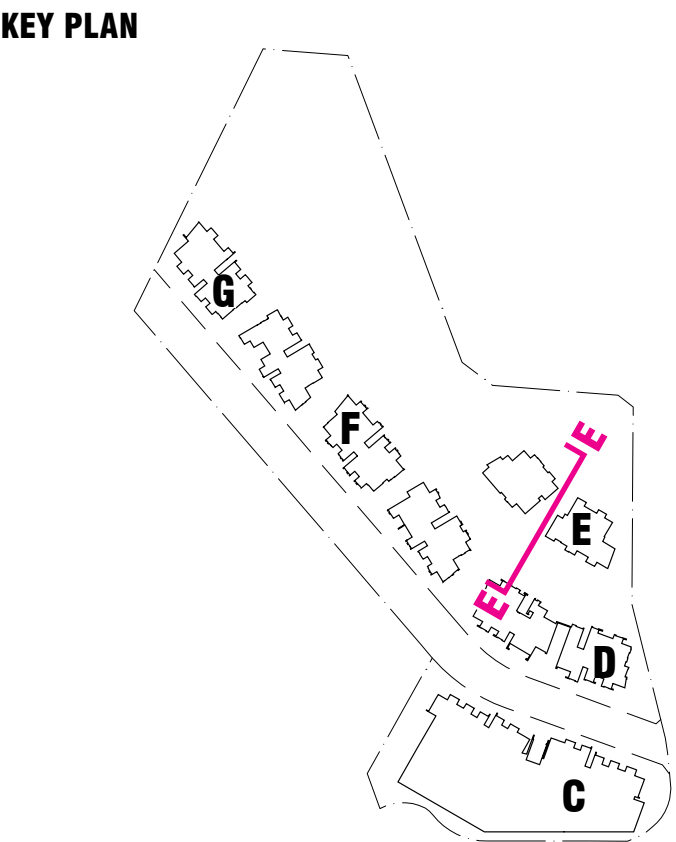


INDICATIVE SECTION DD



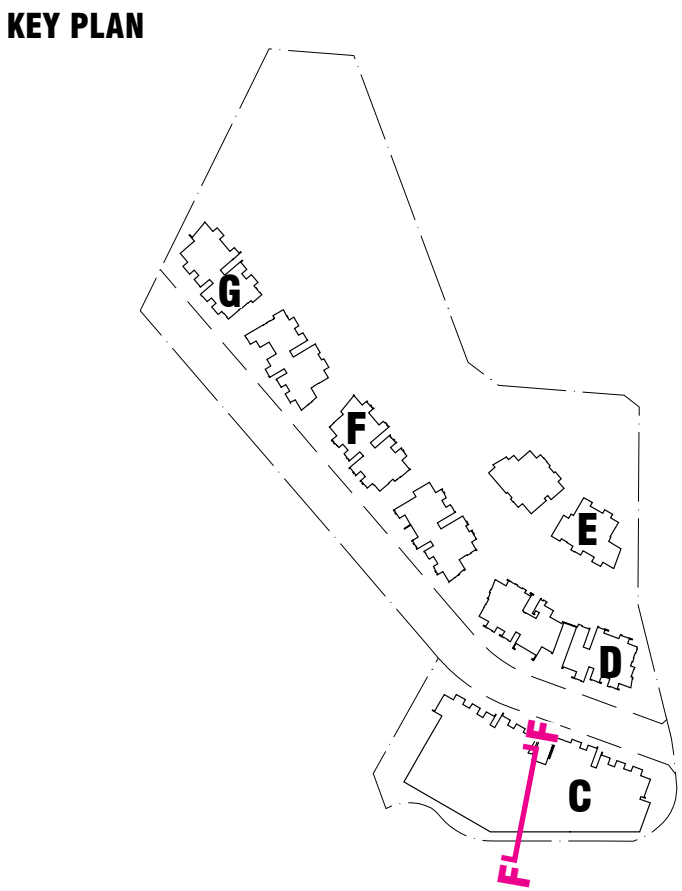


INDICATIVE SECTION EE





INDICATIVE SECTION FF



INDICATIVE MATERIALS

Surface materials

- Stone Paving (light coloured)
- Dark Granite Cobble Setts
- In-situ Exposed Aggregate Concrete
- Timber Deck

Furniture

- Wide Profile Dark Stained Timber
- Charcoal Fine Profile Painted Steel
- Sandstone benches / day beds

Structures

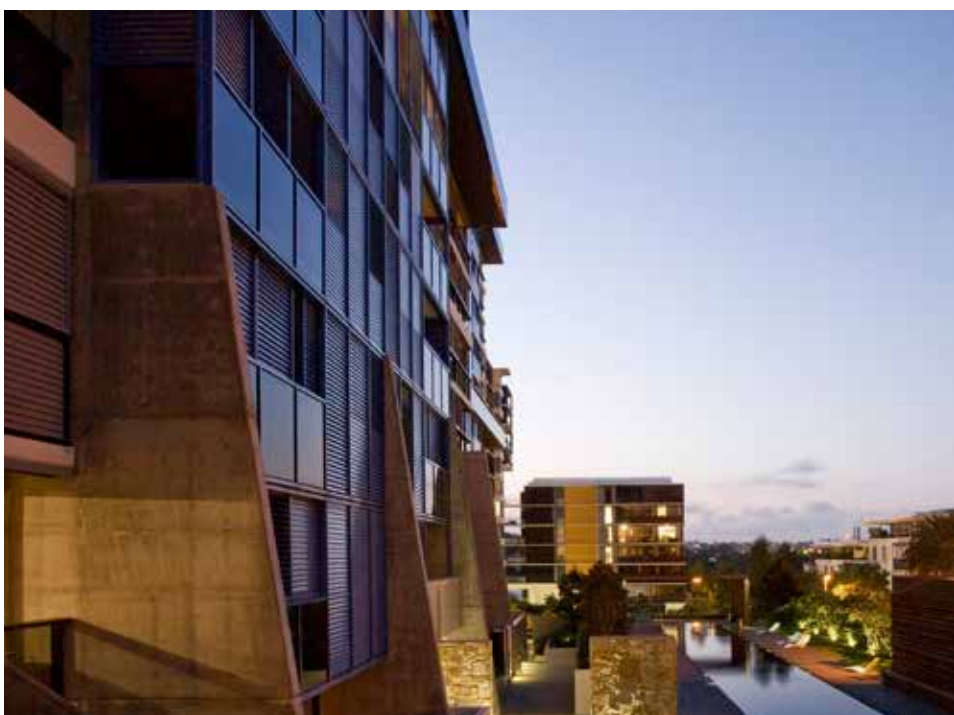
- Timber and Painted Steel Pergolas
- Timber and Painted Steel Cabana with sandstone walling

Walls/Edges

- Off-form Concrete Raised / Terraced Planters
- Steel Edging

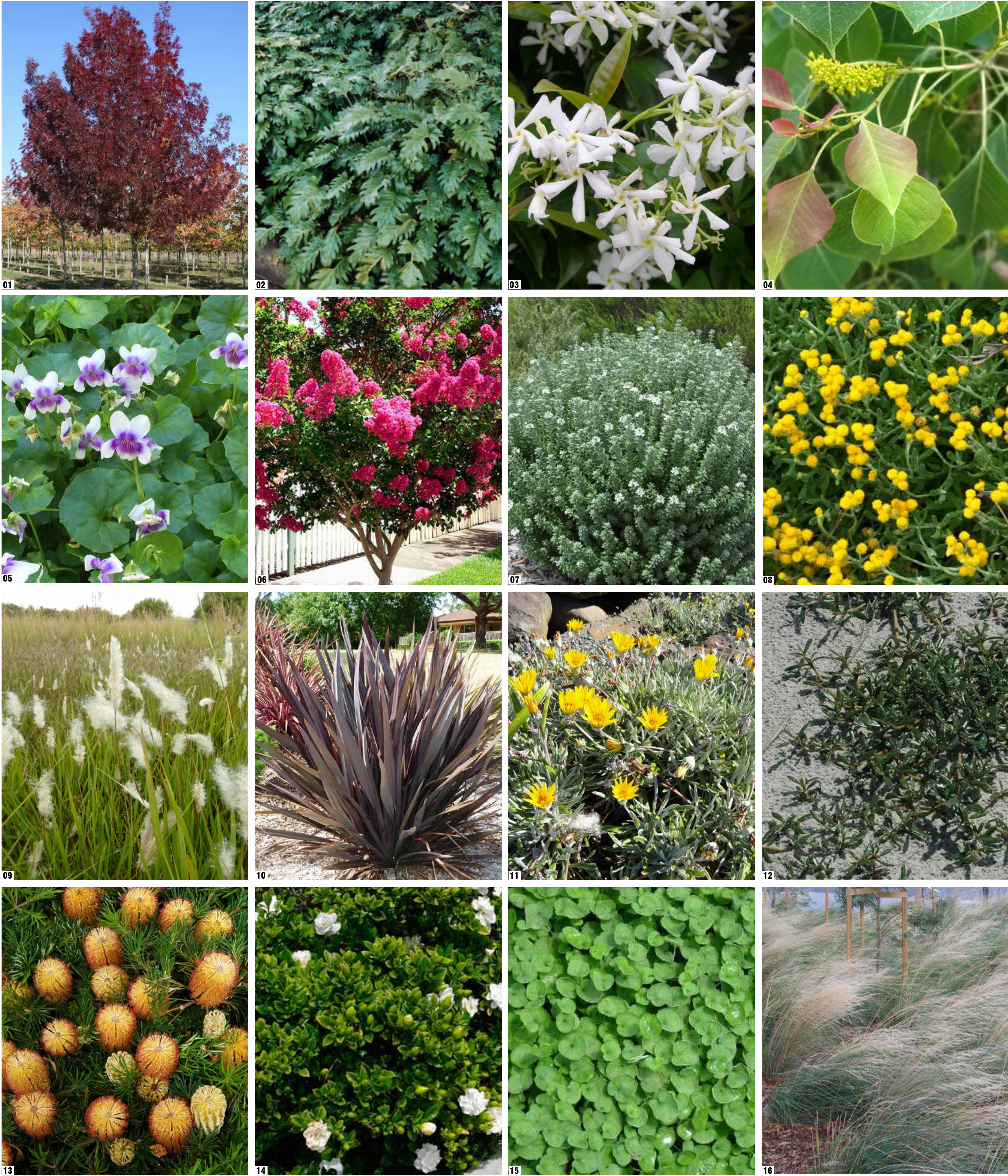
Lighting

- Footpath lighting
- Road lighting
- Ambient (discrete) lighting to landscape features such as:
 - walls,
 - tree and boardwalk uplighting,
 - furniture, and
 - pool and water features



GROUND - INDICATIVE PLANT SCHEDULE

	Botanic Name	Common Name	Mature Height	Mature Spread
Trees				
	<i>Acer buergeranum</i>	Trident Maple	16m	5m
	<i>Banksia integrifolia</i>	Coastal Banksia	12m	4m
01	<i>Fraxinus 'Raywoodii'</i>	Claret Ash	18m	6m
06	<i>Lagerstroemia indica</i>	Crepe Myrtle	4m	3m
04	<i>Sapium sebiferum</i>	Chinese Tallow Tree	7m	3m
	<i>Syzygium australe 'Elite'</i>	Lilly Pilly	4m	3m
Shrubs				
13	<i>Banksia spinulosa 'Bush Candles'</i>	Hairpin Banksia	0.5m	0.6m
	<i>Bursaria spinosa</i>	Sweet Bursaria	10m	3m
	<i>Dodonea viscosa</i>	Giant Hop Bush	1.5m	1.2m
14	<i>Gardenia augusta</i>	Gardenia	1.5m	1.0m
	<i>Kunzea ambigua 'Rivan'</i>	Kunzea Rivan	1-2m	1-2m
	<i>Leptospermum rubrum 'nana'</i>	Red Dwarf Tea Tree	1m	1m
02	<i>Philodendron 'Xanadu'</i>	Philodendron	1.0m	1.0m
10	<i>Phormium tenax 'Purpureum'</i>	NZ Purple Flax	1.0m	1.0m
	<i>Scaevola aemula</i>	Fairy Fan Flower	0.2m	0.8m
07	<i>Westringia fruticosa</i>	Coastal Rosemary	2.0m	1.5m
Ground Cover / Climbers				
	<i>Eremophila glabra "Sliver Emu Bush"</i>	Silver Emu Bush	1.5m	1m
08	<i>Chrysocephalum apiculatum</i>	Common Everlasting	0.6m	1m
	<i>Grevillea 'Bronze Rambler'</i>	Grevillea	0.3m	0.4m
	<i>Hardenbergia violaceae</i>	Purple Coral Pea	1.5m (climber)	1.5m (climber)
	<i>Myoporum parvifolium "Yareena"</i>	Yareen Myoporum	0.2m	1m
	<i>Pandorea pandorana</i>	Wonga Wonga Vine	3m (climber)	5m (climber)
03	<i>Trachelospermum jasminoides</i>	Star Jasmine	6m (climber)	1.5m (climber)
05	<i>Viola hederacea</i>	Native violet	0.2m	0.5m
Grasses				
09	<i>Imperata cylindrica</i>	Cogon Grass	0.5m	0.5m
	<i>Liriope muscari</i>	Lilyturf	0.6m	0.45m
16	<i>Poa labillardieri 'Eskdale'</i>	Tussock Grass	0.9m	0.6m



OPEN RESERVE / RIPARIAN CORRIDOR (Asset Protection Zone)
FIRE RETARDANT SPECIES - INDICATIVE PLANT SCHEDULE

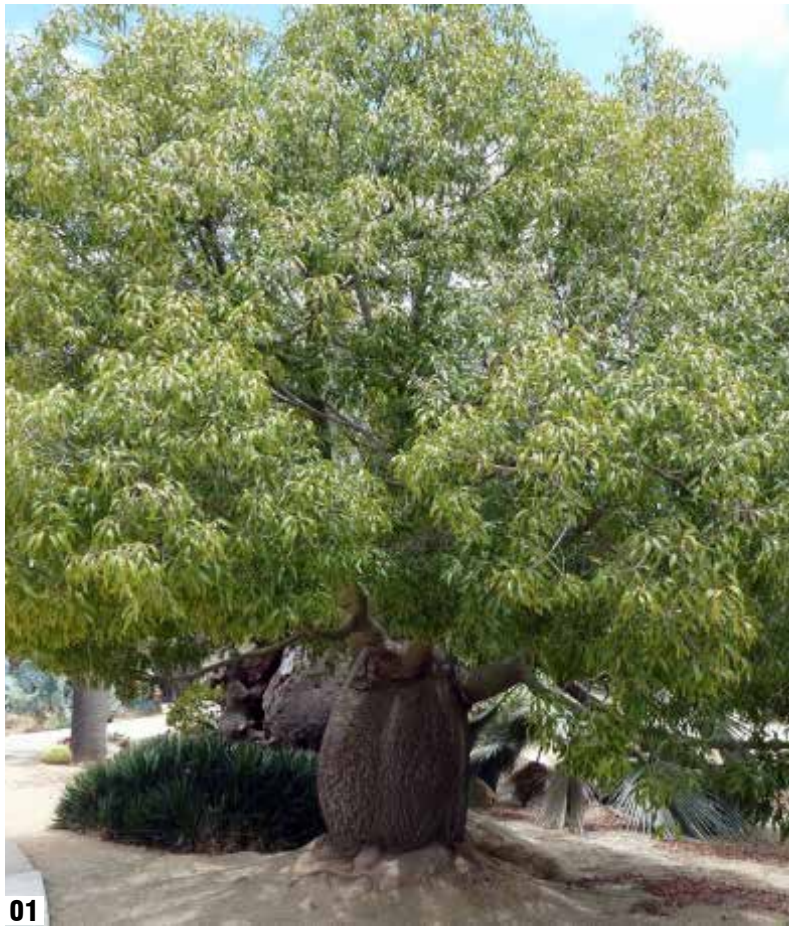
	Botanic Name	Common Name	Mature Height	Mature Spread
Grasses & Groundcovers				
	<i>Dianella revoluta</i>	<i>Spreading Flax-lily</i>	0.3m	0.4m
15	<i>Dichondra repens</i>	<i>Kidney Weed</i>	0.15m	0.4m
11	<i>Gazania</i> sp.	<i>Gazania</i>	0.2m	0.5m
	<i>Liriope muscari</i>	<i>Lily Turf</i>	0.4m	0.5m
12	<i>Portulacaria</i> spp	<i>Jade Plant</i>	0.2m	0.3m

OPEN RESERVE - INDICATIVE PLANT SCHEDULE

	Botanic Name	Common Name	Mature Height	Mature Spread
13	Trees			
	<i>Angophora floribunda</i>	Rough-barked Apple	30m	10m
	<i>Angophora subvelutina</i>	Broad-leaved Apple	20m	10m
	<i>Casuarina glauca</i>	Swamp Oak	20m	8m
	<i>Corymbia maculata</i>	Lemon Scented Gum	20m	10m
	<i>Eucalyptus tereticornis</i>	Forest Red Gum	50m	15m
	<i>Eucalyptus amplifolia</i>	Cabbage Gum	30m	10m
	<i>Eucalyptus baueriana</i>	Blue Box	20m	8m
	<i>Eucalyptus elata</i>	River Peppermint	30m	10m
	<i>Eucalyptus eugenioides</i>	Thin-leaved Stringybark	30m	10m
15	<i>Eucalyptus globoidea</i>	White Stringybark	30m	8m
	Shrubs			
	<i>Acacia floribunda</i>	White Sally Wattle	8m	10m
	<i>Acacia parramattenis</i>	Parramatta Wattle	15m	2m
	<i>Bursaria spinosa</i>	Sweet Bursaria	10m	3m
	<i>Melaleuca linariifolia</i>	Flax-leaved Paperbark	10m	5m
	<i>Melaleuca styphelioides</i>	Prickly-leaved Tea Tree	20m	5m
	Ground Cover			
	<i>Commelina cyanea</i>	Native Wandering Jew	0.3m	-
	<i>Cynodon dactylon</i>	Couch Grass	0.3m	-
16	<i>Microlaena stipoides</i>	Weeping Grass	-	-
	<i>Oplismenus aemulus</i>	Australian Basket Grass	0.3m	-
	<i>Pratia purpurascens</i>	Whiteroot	0.3m	-
	Grasses			
14	<i>Lomandra longifolia</i>	Spiny-headed mat-rush	1m	1m
	Sedges and Rushes			
	<i>Bolboschoenus fluviatilis</i>	March Club Rush	2m	1m
	<i>Carex appressa</i> ;	Tall Sedge	1m	0.5m
	<i>Cyperus exaltatus</i>	Sedge	1.5m	1m
	<i>Juncus usitatus</i>	Common Rush	1m	0.5m
	<i>Paspalum distichum</i>	Water Couch	0.5m	1m
	<i>Schoenoplectus validus</i>	River Club Rush	2m	1m

LEVEL 1 PODIUM, BUILDING C - INDICATIVE PLANT SCHEDULE

	Botanic Name	Common Name	Mature Height	Mature Spread
01	Trees			
	<i>Angophora floribunda</i>	Rough Barked Apple	20m	10m
	<i>Brachychiton rupestris</i>	Queensland Bottle Tree	20m	12m
	<i>Eucalyptus pauciflora</i>	Snow Gum	20m	15m
	<i>Lagerstroemia indica</i>	Crepe Myrtle	4m	3m
	<i>Melaleuca linarifolia</i>	Snow In Summer	10m	4m
	<i>Pyrus betulaefolia</i>	Southworth Dancer	7m	4m
04	Shrubs and Ground covers			
	<i>Banksia ericifolia</i>	Heath Banksia	3m	2.5m
	<i>Beschorneria yuccoides</i>	Mexican Lily	1m	1.5m
	<i>Carpobrotus glaucescens</i>	Pig Face	0.2m	0.3m
	<i>Cerastium tomentosum</i>	Snow in Summer	0.2m	0.6m
	<i>Cycas revoluta</i>	Sago Palm	1.8m	1.8m
	<i>Doryanthes excelsa</i>	Gymea Lily	4m	3m
	<i>Eriostemon myoporoides</i>	Long Leaf Wax Flower	1.5m	1.5m
	<i>Hardenbergia violacea</i>	False Sarsparilla	0.2m	0.4m
	<i>Hibbertia scandens</i>	Guinea Flower	0.45m	0.45m
07	<i>Kniphofia praecox</i>	Red Hot Poker	1.2m	0.8m
	<i>Macrozamia communis</i>	Burrawang	3m	3m
	<i>Pandorea pandorana</i>	Wonga Wonga Vine	3m (climber)	5m (climber)
	<i>Philodendron 'Xanadu'</i>	Philodendron	0.9m	1.2m
	<i>Rhaphiolepis indica 'Cosmic White'</i>	Indian Hawthorn	1.5m	1.5m
	<i>Strelitzia reginae</i>	Bird of Paradise	1.5m	1.5m
	<i>Westringia fruticosa</i>	Coast Rosemary	1.5m	1m
	<i>Zamia furfuracea</i>	Cardboard Palm	1m	0.8m



LEVEL 4 ROOFTOP GARDEN, BUILDING D & G - INDICATIVE PLANT SCHEDULE

Botanic Name	Common Name	Mature Height	Mature Spread
Trees			
<i>Lagerstroemia indica</i>	Crepe Myrtle	4m	3m
<i>Pyrus betulaeifolia</i>	Southworth Dancer	7m	4m
<i>Syzygium australe</i> 'Elite'	Lilly Pilly	4m	3m
<i>Waterhousea floribunda</i>	Weeping Lilly Pilly	8m	5m
Shrubs and Ground covers			
<i>Beschorneria yuccoides</i>	Mexican Lily	1m	1.5m
<i>Callistemon viminalis</i> 'Floral Burst'	Weeping Bottlebrush	2.5m	1.5m
<i>Carpobrotus glaucescens</i>	Pig Face	0.2m	0.3m
<i>Cycas revoluta</i>	Sago Palm	1.8m	1.8m
<i>Doryanthes excelsa</i>	Gymea Lily	4m	3m
<i>Gardenia augusta</i>	Gardenia	1.5m	1.0m
<i>Hardenbergia violacea</i>	False Sarsparilla	0.2m	0.4m
<i>Kniphofia praecox</i>	Red Hot Poker	1.2m	0.8m
<i>Lomandra longifolia</i> 'Tanika'	Spiny Headed Mat Rush	0.6m	0.6m
<i>Macrozamia communis</i>	Burrawang	3m	3m
<i>Myoporum parvifolium</i>	Creeping Boobalia	0.1m	0.5m
<i>Pandorea pandorana</i>	Wonga Wonga Vine	3m (climber)	5m (climber)
<i>Philodendron</i> 'Xanadu'	Philodendron	0.9m	1.2m
<i>Phormium tenax</i> 'Purpureum'	NZ Flax	1m	1.2m
<i>Plectranthus ciliatus</i>	African Spur Flower	0.8m	0.4m
<i>Rhaphiolepis indica</i> 'Cosmic White'	Indian Hawthorn	1.5m	1.5m
<i>Sansevieria trifasciata</i>	Mother In Laws Tongue	1m	0.5m
<i>Strelitzia reginae</i>	Bird of Paradise	1.5m	1.5m
<i>Trachelospermum jasminoides</i>	Star Jasmine	3m (climber)	5m (climber)
<i>Zamia furturacea</i>	Cardboard Palm	1m	0.8m

POCKET PARK / PODIUM POOL - INDICATIVE PLANT SCHEDULE

Botanic Name	Common Name	Mature Height	Mature Spread
Trees			
<i>Acer buergeranum</i>	Trident Maple	16m	5m
<i>Banksia integrifolia</i>	Coastal Banksia	12m	4m
<i>Eucalyptus maculata</i>	Spotted Gum	30m	10m
<i>Fraxinus</i> 'Raywoodii'	Claret Ash	18m	6m
<i>Lagerstroemia indica</i>	Crepe Myrtle	4m	3m
<i>Magnolia grandiflora</i> 'Little Gem'	Dwarf Magnolia	5m	2.5m
<i>Sapium sebiferum</i>	Chinese Tallow Tree	7m	3m
01 <i>Strelitzia nicolai</i>	Giant Bird of Paradise	3-5m	1.5m
02 <i>Syzygium australe</i> 'Elite'	Lilly Pilly	4m	3m
<i>Tristaniopsis laurina</i> 'Luscious'	Water Gum	8m	5m
03 <i>Waterhousea floribunda</i>	Weeping Lilly Pilly	8m	5m
Shrubs			
04 <i>Alpinia caerulea</i>	Native Ginger	1.2m	0.5m
05 <i>Agave attenuata</i>	Agave	1m	1m
06 <i>Banksia spinulosa</i> 'Bush Candles'	Hairpin Banksia	0.5m	0.6m
07 <i>Canna tropicanna</i>	Canna	1.2m	0.8m
08 <i>Cordyline australis</i>	Cabbage Tree	5-10m	5-10m
<i>Dodonea viscosa</i>	Giant Hop Bush	1.5m	1.2m
09 <i>Doryanthes excelsa</i>	Gymea Lily	4m	3m
<i>Dracaena marginata</i>	Dragon Tree	2m	1m
<i>Gardenia augusta</i>	Gardenia	1.5m	1.0m
<i>Kunzea ambigua</i> 'Rivan'	Kunzea Rivan	1-2m	1-2m
<i>Leptospermum rubrum</i> 'nana'	Red Dwarf Tea Tree	1m	1m
<i>Liriope muscari</i>	Lilyturf	0.6m	0.45m
10 <i>Lomandra longifolia</i> 'Tanika'	Spiny Headed Mat Rush	0.6m	0.6m
<i>Loropetalum</i> sp.	Chinese Fringe Flower	1m	1.5m
11 <i>Philodendron</i> 'Xanadu'	Philodendron	1.0m	1.0m
12 <i>Phormium tenax</i> 'Purpureum'	NZ Purple Flax	1.0m	1.0m
<i>Photinia glabra</i> 'Rubens'	Dwarf Photinia	4m	2m
13 <i>Sansevieria trifasciata</i>	Mother In Laws Tongue	1m	0.5m
<i>Scaevola aemula</i>	Fairy Fan Flower	0.2m	0.8m
<i>Strelitzia reginae</i>	Bird of Paradise	1.5m	1.5m
<i>Thysanolaena maxima</i>	Tiger Grass	2.5m	1.5m
14 <i>Rhaphiolepis indica</i> 'Cosmic White'	Indian Hawthorn	1.5m	1.5m
15 <i>Viburnum odoratissimum</i>	Sweet Viburnum	3m	2m
16 <i>Westringia fruticosa</i>	Coastal Rosemary	2.0m	1.5m
<i>Zamia furturacea</i>	Cardboard Palm	1m	0.8m
Ground Cover / Climbers			
<i>Grevillea</i> 'Bronze Rambler'	Grevillea	0.3m	0.4m
<i>Hardenbergia violaceae</i>	Purple Coral Pea	1.5m (climber)	1.5m (climber)
<i>Myoporum parvifolium</i> "Yareena"	Yareen Myoporum	0.2m	1m
<i>Pandorea pandorana</i>	Wonga Wonga Vine	3m (climber)	5m (climber)
<i>Plectranthus ciliatus</i>	African Spur Flower	0.8m	0.4m
<i>Trachelospermum jasminoides</i>	Star Jasmine	6m (climber)	1.5m (climber)
<i>Viola hederacea</i>	Native violet	0.2m	0.5m
Lawn			
<i>Soft Leaf Buffalo</i> 'Sir Walter'	Sift Leaf Buffalo	-	-



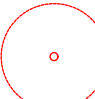
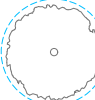
SUMMARY OF EXISTING TREES

Tree Replacements - Ground					
Existing Trees to be removed			Replacement trees		
Existing Tree Reference	Botanic Name	Canopy spread	New Trees	Botanic Name	Mature Canopy Spread (25 years)
T06	Allocasuarina torulosa	7m	NT 01	Corymbia maculata	10m
T07	Allocasuarina torulosa	4m	NT 02	Corymbia maculata	10m
T08	Eucalyptus sp. (already removed)	2m	NT 03	Corymbia maculata	10m
T09	Casuarina glauca	6-8m	NT 04	Corymbia maculata	10m
T10	Corymbia maculata	6m	NT 05	Corymbia maculata	10m
T11	Casuarina cunninghamiana	5m	NT 06	Corymbia maculata	10m
T17	Eucalyptus cinerea	4-6m	NT 07	Corymbia maculata	10m
T18	Robinia pseudoacacia	5-6m	NT 08	Corymbia maculata	10m

Trees nominated for removal and retention have been identified below. Further to advice from the Arborist following a site inspection in May 2019, 'for trees removed as per the landscape plan, replacement trees will be installed to replace the lost canopy within 25 years. The adjacent schedule identifies significant trees to be removed, their existing canopy spread as well as replacemnt trees which will achieve the current canopy spread within 25years. These have bee documented below.

For further information regarding all trees within the site proposed for re-moval and retention, please refer to the following documents:
- Arborist Report dated February 29, 2016, prepared by Australia Tree Consultants Pty Ltd.
- Arborist Inspection DA Report dated 5th June 2019, prepared by Australia Tree Consultants Pty Ltd.

LEGEND

-  EXISTING TREE TO BE REMOVED
-  EXISTING TREE TO BE RETAINED.
TPZ SHOWN IN BLUE

